

## Move Objects together

We have 2 Girls here, we want to move at the same Time.

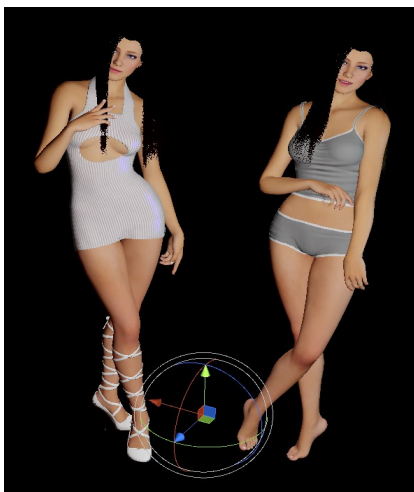
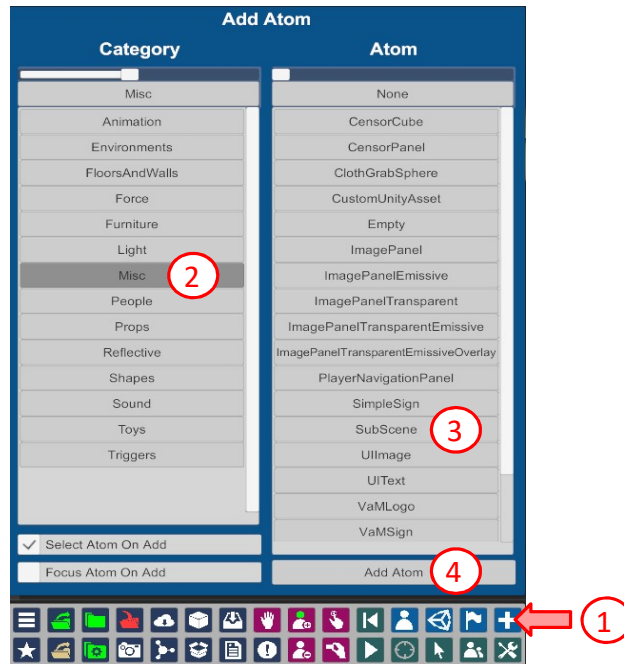


1. Open Add Atom Menu

2. Select Misc

3. Select Subscene

4. Select Add Atom



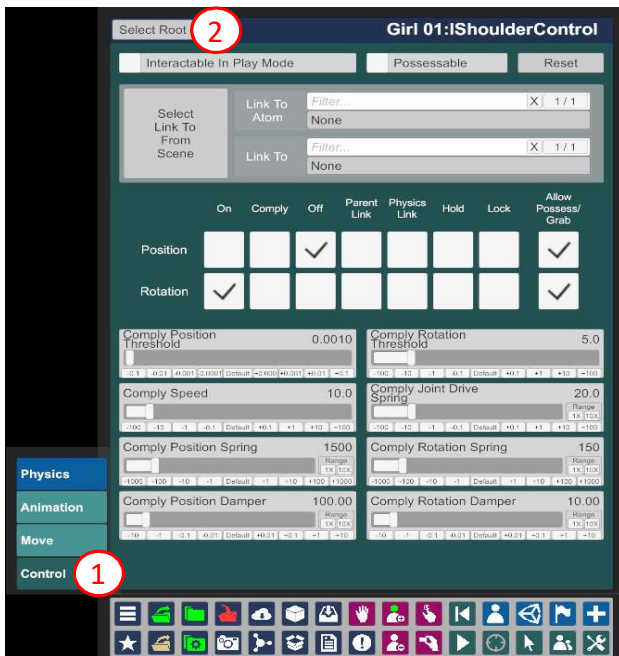
The two Girls later will be moved by moving the Subscene.

Therefore place the Subscene to a point, where it is comfortable to move your Objects later.

In this Case, it is placed between the Girls.

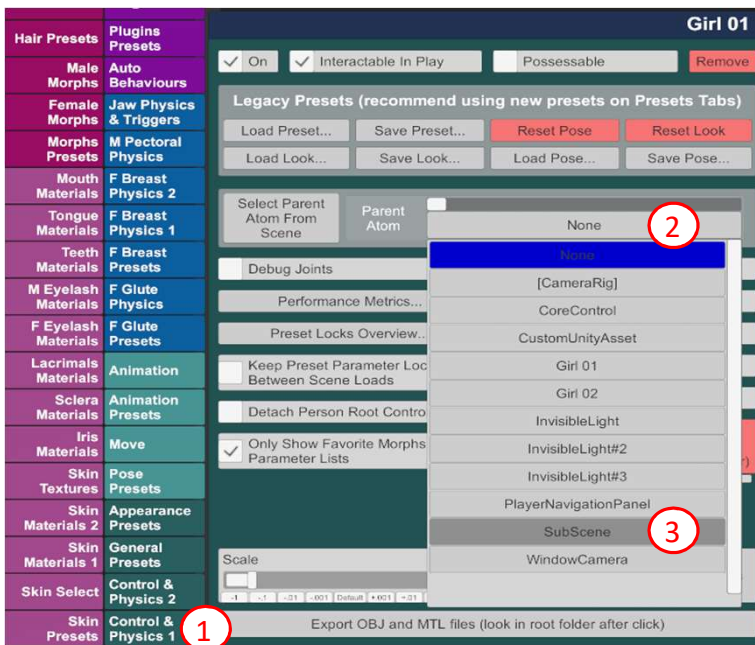


Now select the First Girl or Object.



1. Make shure, you are on the Control Tab

2. Click on Select Root



1. Make shure you are on the Tab, Control & Physics 1

2. Open the Drop down Menu besides Parent Atom

3. Select SubScene

Now the Girl 01 is connected to the Subscene

Now doing the same thing to the second Girl, or to any other Object, you want to move together

After this has been done, select the Subscene, you have created at the beginning and the two Girls or all Objects, you have Connected to the Subscene will move together, by moving the Subscene